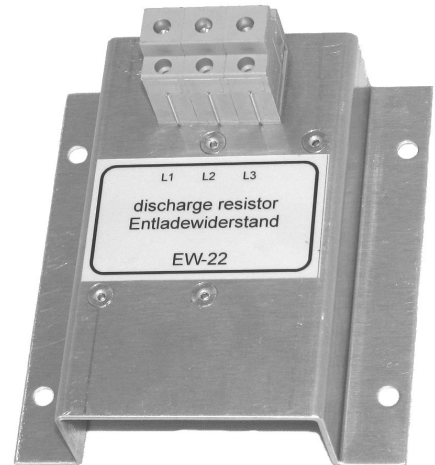


Discharge resistor EW-22

Characteristics

- n High-voltage discharge resistor used to discharge the power capacitors in dynamical PFC systems
- n Replacement of standard discharge resistors
- n to decrease the discharge time of capacitors
- n at least 1 pc. / capacitor needed



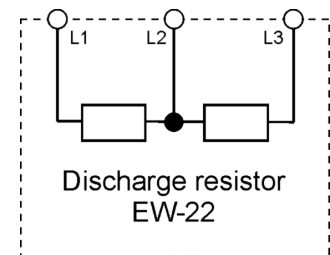
Mounting and connection

For mounting direct on a mounting plate

Direction of mounting: vertical

For best cooling mounting on a metal plate is recommended

Connection via 3-pole terminal



* internal circuit of EW-22

Technical data

Dimensions	90 x 50 x 100 mm (W x H x D)
Weight	Approx. 0,3 kg
Rated resistance	2x 22 kOhm / 5%
Rated Voltage	max. 1.250 Veff
Insulation	3000 V ~
Rated power	50W – with mounting on a cooling plate 300 x 300 x 1,5 mm
Operation mode	Continuos operation
Max. ambient temperature @ nominal load	-30 ...80 °C